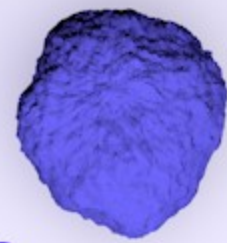


# CANCER IMMUNOLOGY @ BI

## COLD TUMOR



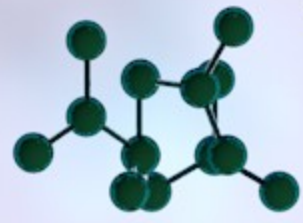
*invisible to the immune system with few to no tumor antigens and T-cells*

TREATMENT MODALITIES TO TURN 'COLD' TUMORS 'HOT':

- Cancer Vaccines
- Oncolytic Viruses
- T-Cell Engagers
- Innate Immune Activators
- Myeloid Cell Immune Modulators



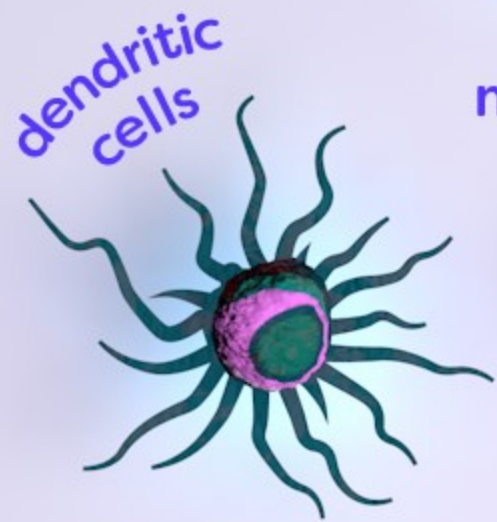
biologics



small molecules



viruses



dendritic cells



TURN COLD TUMORS HOT

## HOT TUMOR



*highly visible to the immune system with high numbers of tumor antigens and T-cells*

- PD-1
- CD73
- LAG3
- Myeloid Cell Immune Modulators

CHECKPOINTS



T-cells

MICROENVIRONMENT IMMUNE SUPPRESSORS

regulatory T-cells

macrophages

## CANCER IMMUNITY CYCLE

